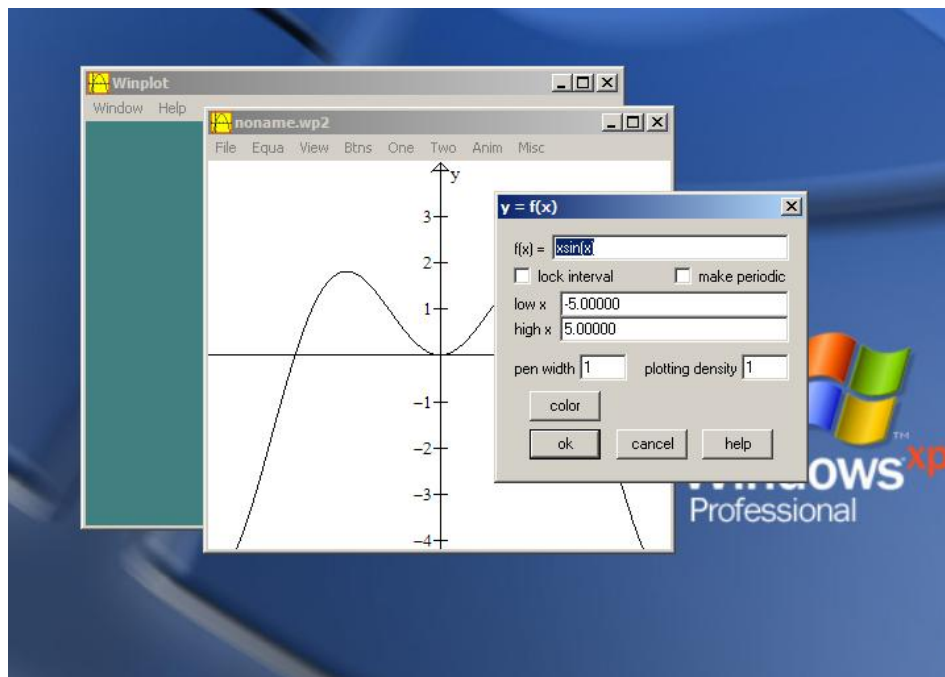


Some WinPlot Hints:



- 1) To download Winplot you can click on [Winplot](#) on Mth 113 Assignments Web site.
- 2) After downloading Winplot and starting it, click on the green screen window.
- 3) Choose 2-dim from the Window menu. This brings up a graphing window.
- 4) Choose Explicit... from the Equa menu. This bring up the $y= f(x)$ dialog box.
- 5) Enter your function.
- 6) If you are going to print on a non-color printer, use only black color.
- 7) You can expand the pen width to make the graph bolder.
- 8) To restrict the domain to $[a, b]$ check the lock interval box and enter 'a' in low x and 'b' in high x. If not, the function has $(-\infty, +\infty)$ for its domain.
- 9) To change the window dimensions choose View... from the View menu
- 10) To change the tic marks, axes, etc, use the View menu.
- 11) To add another function, go to (3).
- 12) To see/edit your functions, choose Inventory from the Equa menu.
- 13) After you have your graph/picture, you can print it and add your equations with pen/pencil. Another option is to copy your graph to the clipboard (File menu) and paste it into a Word document. Then add your equations with text and print or print just the graph and add your equations with pen/pencil.

If that is not clear then we probably need to meet.